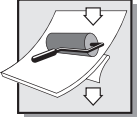


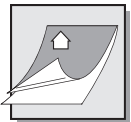
General bonding information

- **Important! Patterned sheets delivered in rolled form should be kept flat for a minimum of 24 hours. Weighing down improves evenness.**
- Ideal processing temperature ranges from + 10 °C up to + 30 °C. The design sheets should be acclimatized, i.e. they should be brought to room temperature prior to processing (avoidance of condensation on the gluing surface).
- A temperature increase of 10 °C will cause our products to expand by approx. 0.7 mm over a length of 1 meter.
- As a rule, an approx. 2-3 mm expansion joint is to be left along the sheet edge!
- In case of high surroundings temperature or major temperature-fluctuations the expansion gap should be increased or the sheet format should be chosen smaller.
- Avoid blistering (air inclusions); use a medium-hard hand rubber roller with a width of approx. 170 mm.
- Remove the backing cover step-by-step from self-adhesive WallFace design sheet, do not touch gluing surface and press the sheet onto the ground as firmly as possible. The final adhesion power will be reached at room temperature after 24 hours.
- WallFace sheets should be processed within 18 months (PUR/PVA pre-treated products are excluded).



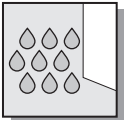
Ground preparation for bonding WallFace design sheets

- The ground should be dry and flat, free from loose parts, dust, dirt, grease, wax and silicone. To achieve a maximum adhesion, non-absorbent surfaces should be cleaned with alcohol (ethanol, isopropyl alcohol).
- WallFace design sheets are suitable for both absorbent and non-absorbent surfaces such as plasterboard, uncoated chipboard, MDF or smoothed brickwork, whereby non-adhesive grounds are recommended.
- In case of non-absorbent grounds surface tension should be at least 38 dyn (industrial info!). For application on convex or concave grounds all sheet edges must be fixed mechanically.



Surface protection

- A protective film protects our surfaces against damages. This protective film should be removed only after the application of our design sheets.
- Following the removal of the protective film, no adhesive tape, e.g. Scotch, Sellotape should be allowed to stick to the unprotected, decorative surface.



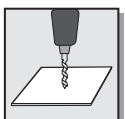
Suitability for moist rooms / Temperature resistance / Abrasion resistance

- Suitability for moist rooms is required where WallFace wall panels are exposed to high humidity or splash water. WallFace wall panels are not appropriate wet areas. The grade of suitability for moist rooms of every product is indicated in the product description on www.wallface.de
- The grade of resistance against high temperatures is indicated in the product description on www.wallface.de and refers to the constant application of the product be it stuck or not and the steady ambient temperature.
- Products that are marked as to be abrasion resistant have a very scratch-proof surface. Individual information can be found on www.wallface.de.



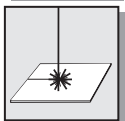
Cutting / Punching

- WallFace design sheets with less than 2 mm thickness can be easily cut with a wallpaper knife. Simply notch the surface and break about the edge. For all other product lines and for Deco Collection up to 3 mm thickness the cutting pressure has to be increased. After cutting and breaking our WallFace design sheets the foil on the back side has to be cut separately. Always use well sharp knives. For mechanical cutting, we recommend the use of paper or veneer cutting machines.
- Band steel cutting is recommended for design sheets in thickness from 1 up to 1.5 mm.



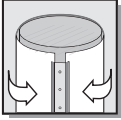
Drilling

- All WallFace design sheets can be drilled from the decor side.



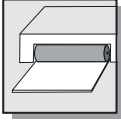
Laser cutting

- All WallFace design sheets can be processed with standard lasers. The cutting speed conforms to the watt power of the laser.



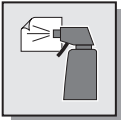
Column facing

- When covering columns, the bending radius of the respective WallFace product must be accounted for (please see the product characteristics in the online catalogue www.wallface.de).
- We recommend double-sided, adhesive tape in order to fix both ends as a help during application.
- An expansion joint of 2-3 mm is also to be left when covering columns.
- It is essential that a mechanical fastening such as a floor transition profile is used as edging.
- During column applications involving M-Style products, on absorbent surfaces we recommend the additional use Spezialkleber oder handelsüblichen Montagekleber auf Silikonbasis.



Printing

- Use screen and digital printing on smooth surfaces. Digital printing is possible on structured surfaces. M-Style products are digital printable (for product suitability please see the online catalogue www.wallface.de). We offer original samples for tests. Info sheets on demand.



Cleaning / Care



- Deco Collection, Structure Collection, M-Style Collection: in case of light dirt by means of soft cleaning cloth (it should be free of dust and free of dirt).
- In case of thick dirt by means of standard plastic or window cleaner (spray cleaners not onto the material surface, but sparingly onto the cleaning cloth).
- Do not use abrasive cleaners, solvent cleaners or pure alcohol!
- Leather Collection: Clean leather surfaces by means of standard liquid soap and then remove the soap with a humid cloth.
- Imitation fur surfaces: In case of light dirt clean imitation surfaces with a vacuum cleaner, in case of strong dirt clean with a humid cloth.
- We recommend that printed surfaces are only cleaned with slightly soapy water. No abrasive, glass cleaning or similar agents may be used. Rinse with clean water. Cleaning/care may vary in accordance with the printing colour manufacturer.
- Polishing kit for WallFace acrylic or glass surfaces. Marks from use or scratches on the acrylic surfaces can be repeatedly removed using the polishing kit. Polishing simultaneously protects the surface. The kit contains polishing paste, a sponge and a polishing cloth.



Disposal

- The keeping of healthy environment has high priority for us! We check all raw materials used for their environmental compatibility.
- Because not everyone has its own plastic disposal container, we pay special attention in development of new products to use only high-quality materials: materials, which may be disposed safely with the domestic waste. By request we are pleased to provide LGA certificates for all WallFace design sheets.

Information for industrial business clients and retail sellers

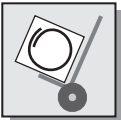


Storage instructions

- WallFace design sheets must always be kept in indoor stock, no storage outside! Following instructions are to be considered:
- Design sheets to be stored flat, rolled packed design sheets should be unpacked and laid out flat and - if necessary - subjected to additional weight to improve flatness (Use carton underlay and weigh down the entire sheet in order to prevent damage.)
- Store the uppermost plate in the pile with decor side down.
- Protect WallFace products from UV rays.
- Do not expose WallFace products to moisture or humidity.
- Protect material from dirt, dust and mechanical damages.
- A permanent storage of more than 3 months in temperature less than 0 °C or more than + 30 °C may impact the quality of our design sheets and should be avoided.



Transport instructions



- In general, for the transport of WallFace products pay attention to protect them from dirt, UV radiation, moisture and mechanical damages.
- Use stable, flat pallets with carton bedding, the pallet should be longer than the design sheets.
- Place the uppermost design sheet on the pallet with the decoration side face down. This uppermost design sheet should be protected in addition by a carton and a board (e.g., chipboard, HDF...). The WallFace design sheets should be protected against slippage.
- The edges and sides must also be safeguarded (edge protection, PE film, ...)
- Temperatures may not fall below -35 °C, or exceed +50 °C.
- Structured sheets to be transported on pallets with the patterns running in same direction.



This information leaflet has been prepared to the best of our knowledge and with special care. Its content derives from practical experience and in-company testing and corresponds with our current know-how. The leaflet should serve as information and does not contain any guarantees with regard to product characteristics or suitability for certain applications. No responsibility is accepted for printing and standard errors and mistakes.